

ONE OF A KIND HISTORICAL EXCELLENT DEVELOPMENT OPPORTUNITY FOR SALE/ OR LEASE

San Clemente, CA



FEATURES INCLUDE:

- ◆ Fully ENTITLED; approved for Event/Theater Center and up to 7 Restaurant Space(s)
- ◆ Fabulous *HISTORICAL* North Beach Location
- ◆ Approx. 27,000 SF parcel
- ◆ 8,200 SF of Event/Theater Space
- ◆ Up to 6,200 SF of Restaurant Space with additional 5,200 SF of storage/kitchen space
- ◆ Steps from the Ocean
- ◆ Historical Preservation APPROVED
- ◆ Easy access to the 5 FWY
- ◆ Immediate access to Beach and Metrolink/OCTA

1700-1724 N EL CAMINO REAL

For more information please contact:

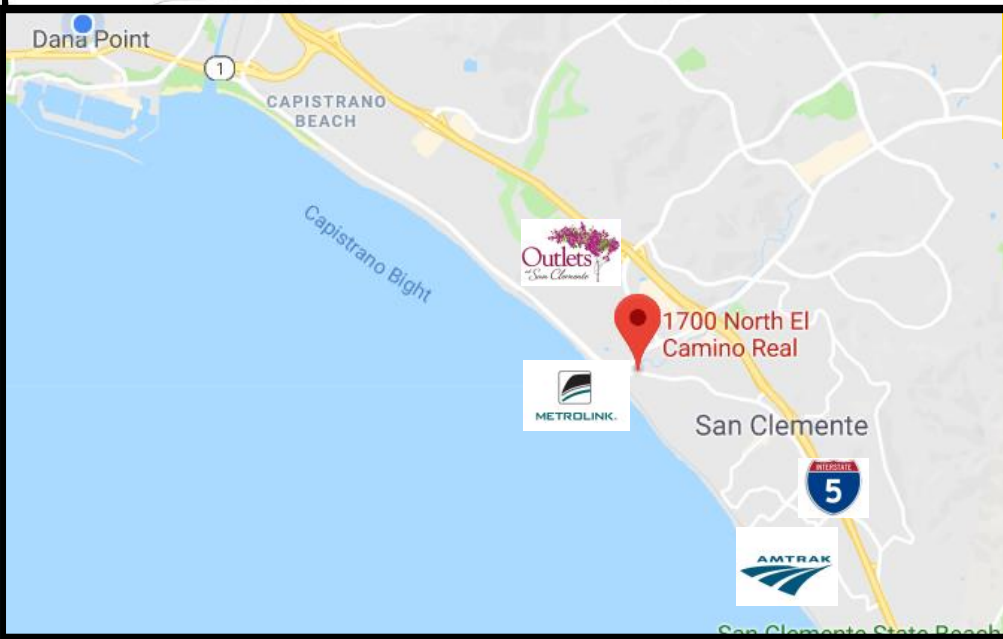
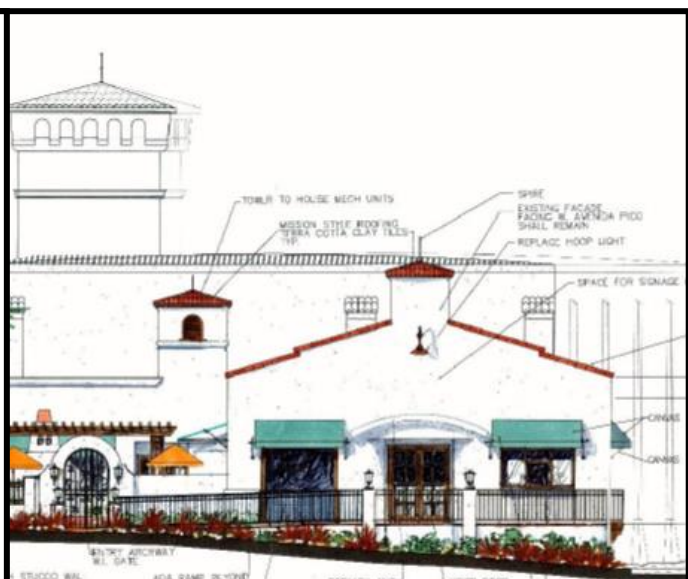
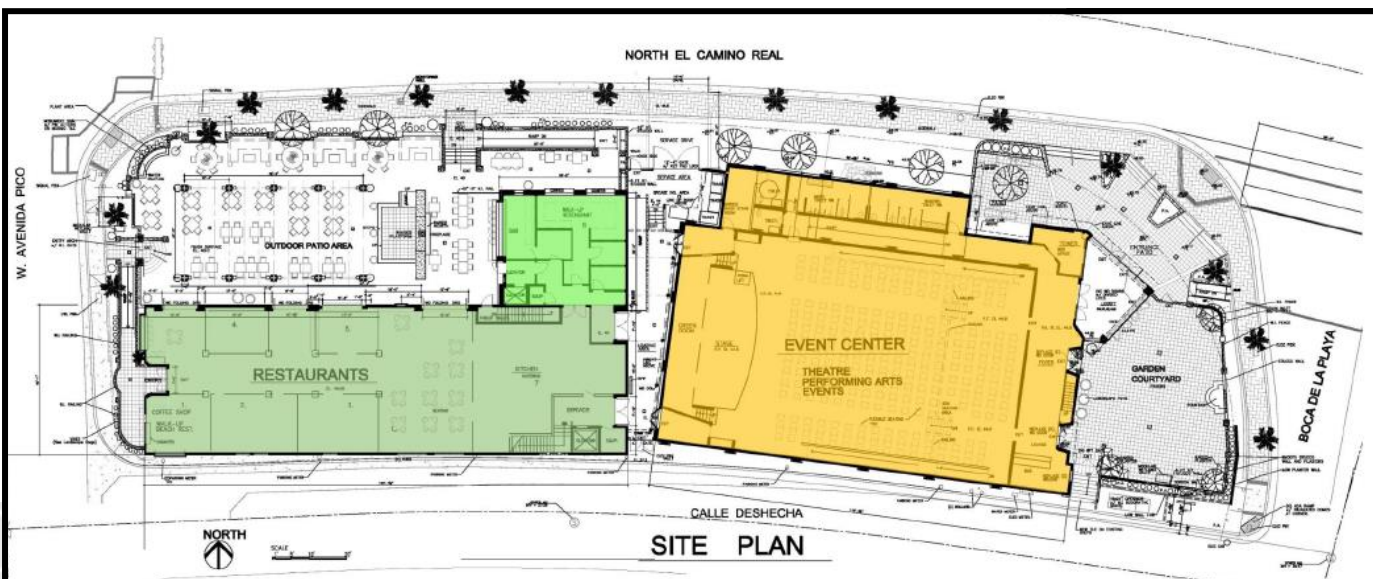
Wit Muller
P. 949.248.5846 x 232
CA #00321314
Wit@mullercre.com

Jackie Dalsimer
P. 949.248.5846 x 229
CA #01839242
Jackie@mullercre.com

MULLER
COMMERCIAL REAL ESTATE

www.MullerCRE.com/Miramar

Although all information is furnished regarding for sale, rental or financing is from sources deemed reliable, such information has not been verified and no express representation is made nor is any to be implied as to the accuracy thereof, and it is submitted subject to errors, omissions, changes of price, rental or other conditions, prior sale, lease or financing, or withdrawal without notice. Muller Commercial Real Estate 00389107



1700-1724 N EL CAMINO REAL

For more information please contact:

Wit Muller
P. 949.248.5846 x 232
 CA #00321314
 Wit@mullercre.com

Jackie Dalsimer
P. 949.248.5846 x 229
 CA #01839242
 Jackie@mullercre.com



COMMERCIAL REAL ESTATE

www.MullerCRE.com/Miramar

